



Simply the friendliest supplier on the planet!

May 2007

## JBC Friends

### Rejuvenation

It's Spring here in the heart of America, and we're excited to see warmer weather, buds and blooms, and the start of the spring-summer family holidays and wedding season. To help you stock up for these giftable events, we are featuring Findings in this issue.

### Featuring

Our Findings Department

### Inside

- Classic Posts Sale . . . . .2
- Post & Pendants . . . . .3
- Heart Chains & Clasps 4
- Clasps on Sale . . . . .5
- Fashion Earrings . . . . .6
- Beading Components .7
- Jeweler's Tools . . . . .8

### New Items

- Heart Chains . . . . .4
- Heart Clasps . . . . .4
- Magnetic Clasps . . . . .4
- 18KW Lobster Clasps .5
- Wire Protectors . . . . .7
- Watch Care Kit . . . . .8

**Now Available!**  
Double O-ring crowns

Just received, a supply of the following diver's double O-ring crowns:  
903/10W, 904/10W,  
906/10W, 910/10W,  
926/10W, 949/10W



## Where's Susie? Constantly on the move to help customers!

Everyone at Jules Borel & Co. provides customer service, but when you need a little extra help, you will probably talk to Susie. A forty-year veteran at Jules Borel & Co., Susie is here to assist you with account preferences, special requests, questions, returns and credits. She also helps trouble-shoot any business challenges our customers may experience, and is a key contributor to process improvement. All this keeps Susie constantly on the go—all over our six story building—and the amazing thing is that she never uses the elevator!

Susie's first job at Jules Borel & Co. was as secretary for Pete Borel, then company president. She has also purchased Watch Materials and supervised the Shipping Department. With her experience, friendliness and excellent customer service, she has evolved as our lead "problem" solver.

Besides her helpfulness and high energy, Susie is known as an enthusiastic Chiefs fan and lover of dark chocolate. She also loves music, theater, animals and being outdoors.

When asked about her forty-year tenure, Susie stated, "I got hooked at Jules Borel & Co. because Poppie (Jules) cared so much about everyone. I've stayed because everyone here is so friendly and shares the same attitude towards providing excellent customer service."

According to Mark Borel, President Emeritus, "From the beginning, Susie has been a take charge lady. When Pete was president of the company, she took care of a multitude of duties in helping him. She also began to take phone calls from customers who needed extra help. This eventually became her main job, and our customers just love her. It is people like Susie, who have devoted their lives working for Jules Borel, that have helped build our company into one of the best suppliers in the country."

*While camera-shy Susie has her own office, she has access to computers and phones all over the building. You might find her anywhere, such as taking a call on another floor, on the stairs, or heading to shipping.*



### Jewelry web page update

When your Jewelry Catalog is "missing", go to [julesborel.com](http://julesborel.com) and click on Jewelry, Resale to see this menu of items in our printed catalog. Over half of the categories are linked to pages that you can view or print for reference. Please note that while most of the price lists are retail, ALL are password protected.

### Service Upgrade More time to order!

Effective March 1, 2007, the cut-off time for same day shipping of **overnight** orders is 3:00pm Central time.

# Classic Earrings on Sale

*Classic Ball Earring Sale Expires 6/15/07*



## Polished Ball Ear Post with Nut

Stock up and save on these classic ball earrings, standard ear nut included. Receive the 10-rate\* when you purchase 3-9 pieces per style ordered.

Size	14KY		14KW		YGF		Sterling	
	Stock#	10-rate	Stock#	10-rate	Stock#	10-rate	Stock#	10-rate
2 mm					202-895	\$ 0.93	204-895	\$ 0.73
3 mm	200-811	\$ 5.44	201-811	\$ 4.88	202-811	0.91	204-811	0.73
4 mm	200-813	6.21	201-813	6.02	202-813	1.22	204-813	1.17
5 mm	200-864	7.36	201-864	8.04	202-864	1.26	204-864	1.28
6 mm	200-812	9.67	201-812	7.34	202-812	1.93	204-812	1.01
7 mm	200-815	8.00	201-815	8.04	202-815	2.08	204-815	1.38
8 mm	200-826	9.77	201-826	10.14	202-826	2.95	204-826	1.77



## Polished Ball Ear Post with Ring and Nut

Get the 10 rate\* when you purchase 3-9 pieces per style ordered on these classic ball earrings with rings, standard ear nut included. Stock up this month only!

Size	14KY		14KW		YGF		Sterling	
	Stock#	10-rate	Stock#	10-rate	Stock#	10-rate	Stock#	10-rate
3 mm	200-818	\$ 8.18	201-818	\$ 8.55	202-818	\$ 1.07	204-818	\$ 0.90
4 mm	200-819	6.82	201-819	6.29	202-819	1.44	204-819	1.59
5 mm	200-860	7.92	201-860	8.98	202-860	1.47	204-860	1.70
6 mm	200-822	7.47			202-822	1.45	204-822	1.67
7 mm	200-824	8.07			202-824	2.28	204-824	2.37
8 mm	200-825	7.94			202-825	2.82	204-825	2.70

\*Sale price on multiples per style, not mixable

Prices based on \$665 Gold and \$13.50 Silver Market



## "The Spring" Ring Guards

Adjust up to three sizes with these guards utilizing a leaf spring. Gold filled, quality stamped, marked with mm size.

12-piece assortment

64A-45 12-pc. Asst. Y & W \$ 45.40  
Individual Ring Guards

Size	YGF	WGF	
2mm	642-40	643-40	
2.5mm	642-41	643-41	
3.0mm	642-42	643-42	
3.5mm	642-43	643-43	
4.0mm	642-44	643-44	
<b>Price ea/l</b>	<b>/3</b>	<b>/10</b>	<b>/50</b>
\$ 4.72	\$ 4.30	\$ 4.01	\$ 3.77

Mix sizes for the best price breaks.



## Coin Mounts for New President Dollar

With four presidential dollar coins being minted each year, there are lots of opportunities for creating jewelry. (Same size as Sacajawea dollar coin.)

Regular Coin Edge

14KY	Price ea.	YGF	Price ea.	Sterling	Price
300-13	\$ 34.77	302-13	\$ 7.38	304-13	\$ 5.48

Simulated Rope Edge

14KY	Price ea.	YGF	Price ea.	Sterling	Price
300-213	\$105.41	302-23	\$13.96	304-213	\$14.71



## Euro Coin Mounts

Size	YGF	Each	Sterling	Each
1 Cent	302-46	\$ 6.18	304-46	\$ 5.85
2 Cent	302-47	6.29	304-47	6.23
5 Cent	302-48	6.47	304-48	6.04
10 Cent	302-49	6.96	304-49	5.98
20 Cent	302-88	6.74	304-88	6.16
50 Cent	302-89	6.89	304-89	6.48
1 Euro	302-94	6.83	304-94	6.482
Euro	302-93	6.91	304-93	6.96

Price breaks available at 3, 10 & 50



# Call us for other styles Just Part of our Full Selection



## Six-prong Mounting with Flat Back

### Pendant Mountings

Carats	14KY	14KW	Each
0.05	90-605	91-605	\$ 5.57
0.07	90-607	91-607	6.15
0.10	90-610	91-610	6.58
0.12	90-612	91-612	6.61
0.15	90-615	91-615	7.85
0.20	90-620	91-620	8.64
0.25	90-625	91-625	10.06
0.33	90-635	91-635	10.04
0.50	90-650	91-650	11.31
0.63	90-662	91-662	14.40
0.75	90-675	91-675	14.55
1.00	90-6100	91-6100	18.68
1.25	90-6125	91-6125	18.41
1.50	90-6150	91-6150	20.15
2.00	90-6200	91-6200	20.03

### Ear Post with Nut

Carats	14KY	14KW	Each
0.05	200-680	201-680	\$ 6.93
0.07	200-681	201-681	7.74
0.10	200-682	201-682	8.13
0.12	200-683	201-683	8.48
0.15	200-684	201-684	9.74
0.20	200-685	201-685	10.69
0.25	200-686	201-686	11.42
0.35	200-687	201-687	11.46
0.50	200-688	201-688	12.97
0.65	200-689	201-689	14.42
0.75	200-690	201-690	15.00
1.00	200-691	201-691	18.97
1.25	200-692	201-692	21.18
1.50	200-693	201-693	18.86
2.00	200-694	201-694	21.25



## Princess Mountings

### Ear Post with Nut

Size	14KY	Price/ea.	14KW	Price/ea.
2.5mm	200-180	\$ 7.74	201-180	\$ 8.08
3mm	200-181	8.68	201-181	9.01
3.5mm	200-182	10.02	201-182	10.30
4mm	200-183	11.43	201-183	11.64
4.5mm	200-184	12.48	201-184	11.64
5mm	200-185	13.88	201-185	14.28
5.5mm	200-186	15.11	201-186	15.39
6mm	200-187	17.10	201-187	17.26

### Pendant Mountings

Size	14KY	Price/ea.	14KW	Price/ea.
2.5mm	90-180	\$ 7.23	91-180	\$ 7.11
3mm	90-181	7.82	91-181	7.93
3.5mm	90-182	9.22	91-182	8.98
4mm	90-183	10.15	91-183	10.15
4.5mm	90-184	13.31	91-184	13.43
5mm	90-185	14.72	91-185	14.72
5.5mm	90-186	15.53	91-186	15.53
6mm	90-187	17.17	91-187	16.94



## Three Prong Mountings

Three-prong basket pendant mountings.

Carats	mm	14KY	Each	14KW	Each
0.25	4.00	90-234	\$ 11.29	91-234	\$ 11.76
0.35	4.50	90-235	12.01	91-235	12.49
0.5	5.25	90-236	14.11	91-236	14.47
0.75	5.75	90-238	15.13	91-238	15.99
1.00	6.50	90-239	18.70	91-239	19.60

Ear Post with Nut, also available in 18KY and Platinum.

Carats	mm	14KY	Each	14KW	Each
.12	3.00	200-233	\$ 7.65	201-233	\$ 9.45
.25	4.00	200-234	9.09	201-234	11.20
.35	4.50	200-235	9.79	201-235	12.09
.45	5.00	200-235.5	9.88	201-235.5	12.33
.50	5.25	200-236	11.25	201-236	13.61
.60	5.50	200-237	11.59	201-237	14.03
.75	5.75	200-238	12.26	201-238	15.04
1.00	6.50	200-239	14.12	201-239	17.49



## Fun Martini Glass Earrings

A delightfully different look is created with three tapering prongs on these yellow and white gold earring mounts.

Size/mm	14KY	Each	14KW	Each
3.5	200-160	\$ 9.94	201-160	\$ 9.97
4.0	200-161	10.46	201-161	10.62
4.5	200-162	10.72	201-162	11.13
5.0	200-163	11.76	201-163	11.91
5.5	200-164	13.05	201-164	13.21
6.0	200-165	14.99	201-165	15.15
6.5	200-166	14.86	201-166	15.28

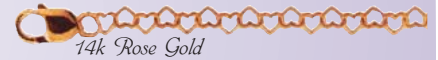
Includes medium weight ear nuts.  
Price breaks available at 3 and 10 pieces.



## Heart-link Jewelry Chains



Sterling Chains priced each at J.C.		/1	/3
HRT/7-STER	Heart Bracelet 7"	\$ 1.37	\$ 1.22
HRT/9-STER	Heart Anklet 9"	1.75	1.56
HRT/16-STER	Heart Chain 16"	2.89	2.56
HRT/18-STER	Heart Chain 18"	3.13	2.78



### Gold Chains priced each at J.C.

HRT/7.5-14KY	7.5"	\$ 29.34
HRT/16-14KY	16"	56.56
HRT/18-14KY	18"	66.62
HRT/7.5-14KW	7.5"	29.48
HRT/16-14KW	16"	57.49
HRT/18-14KW	18"	64.74
HRT/7.5-14KR	7.5"	29.34
HRT/16-14KR	16"	56.89
HRT/18-14KR	18"	64.04

Prices based on \$665 Gold and \$13.50 Silver Market

## Heart-linked Chains + Heart-shaped Clasps = Delightful

Everyone loves these chains with their heart-shaped links. The larger sizes are ideal for hanging charms, and the smaller sizes for pendants. Or wear any of these as just chains!

Style #	Quality	Bulk Chain per inch at J.C.	<100"	>100"
334-186	Sterling	3mm Heart Bulk Chain	\$ 0.19	\$ 0.17
334-187	Sterling	4mm Heart Bulk Chain	0.30	0.27
334-188	Sterling	5mm Heart Bulk Chain	0.55	0.50
334-189	Sterling	6mm Heart Bulk Chain	0.78	0.70



## Have a Heart

To finish our new heart-links or any other chain, we have brought in these delightful heart-shaped clasps.

Stock #	Style	Price ea./1	/3	/10
Sterling Heart Toggle Clasp				
364-153	Toggle Clasp	\$ 2.88	\$ 2.55	\$ 2.25
Sterling Heart Lobster Claws				
364-195	6x10mm Lobster Claw	3.30	2.97	2.64
364-196	7x13mm Lobster Claw	4.34	4.00	3.60
364-197	9.8x11.2mm L.C.	3.74	3.40	3.04
Sterling Heart Clasps				
364-193	9mm I-strand	4.73	4.40	3.96
364-194	9.8mm I-strand	5.21	4.87	4.40



## Stylin' Magnetic Clasps

Magnetic clasps are very popular now, so we have ordered in some great new sterling styles! And if you're concerned about their holding power, wait until you try to pull them apart!

Stock #	Style	Price ea./1	/3	/10
364-190	6mm Round	\$ 5.57	\$ 5.23	\$ 4.74
364-191	8mm Round	6.69	6.36	5.78
364-192	6x10mm Oval	5.57	5.24	4.74

**New!**



## Magnetic Clasps POP Sign

Purchase \$25.00 of magnetic clasps and receive this Point-of-Purchase sign FREE! Fits any 5" x 7" frame.

Doc-magsign \$2.50

# Popular Clasps on Sale

**Jorel**

## Lovely Lobster Claw Clasps on Sale

Shown and priced with a jump ring, lobster claw clasps are also available without rings. Some sizes are also available in 14K rose gold, platinum and YGF. The following prices represent a 5% savings.



### Sterling and White Gold

Size mm	Sterling			14KW			18KW			
	Price ea./1	/3	/10	Price ea./1	/3	Price ea./1	/3	/10		
8x3				361-80R	\$ 8.36	\$ 7.94	<b>36E-80R</b>	\$ 11.64	\$ 11.10	
10x4	364-81R	\$ 1.39	\$ 1.07	\$ 0.89	361-81R	11.93	11.38	<b>36E-81R</b>	16.82	16.12
12x4	364-82R	1.93	1.61	1.39	361-82R	17.72	16.98	<b>36E-82R</b>	23.35	22.44
14x5	364-84R	2.31	2.00	1.75	361-84R	23.79	22.85			

**New!**

### Yellow Gold

Size mm	14KY			18KY		
	Price ea./1	/3	/10	Price ea./1	/3	/10
7x2.5	360-85R	\$ 5.37	\$ 5.05	\$ 4.82		
8x3	360-80R	8.06	7.65	7.33	36C-80R	\$ 12.24 \$ 11.69 \$ 11.24
9x3	360-91R	13.79	13.19	12.68		
10x4	360-81R	11.62	11.09	10.66	36C-81R	17.62 16.89 16.27
12x4	360-82R	13.65	13.05	12.56	36C-82R	24.78 23.81 22.95
14x5	360-84R	18.38	17.62	16.97	36C-84R	37.30 35.92 34.65



### Yellow Gold Larger sizes

Size mm	14KY			18KY		
	Price ea./1	/3	/10	Price ea./1	/3	/10
16x6	360-86R	\$ 35.06	\$ 33.89	\$ 33.08		
16x8	360-87R	53.59	51.90	50.71	36C-87R	\$ 73.68 \$ 71.42 \$ 69.80
18x9	360-99R	71.13	68.95	67.39	36C-99R	100.47 97.46 95.27

### Sterling Larger sizes

Size mm	Sterling			
	Price ea./1	/3	/10	
16x6	364-86R	\$ 2.45	\$ 2.13	\$ 1.88
18x9	364-99	4.14	3.83	3.44

Prices may fluctuate depending on the gold and silver markets, and are subject to change.



## Purchase by the dozen and save!

Round 6mm magnetic clasps are cheaper by the dozen!

		Price ea./1	3	12
362-175	YGF	\$ 4.20	\$ 3.87	<b>\$ 2.97</b>
364-175	STER	3.22	2.89	<b>2.19</b>
365-175	VVP	2.00	1.67	<b>1.21</b>
366-175	GP	2.00	1.67	<b>1.21</b>

### Sterling Elongated Magnetic Clasps

		Price ea./1	3	10
364-176	Medium	\$ 6.85	\$ 6.51	\$ 5.92
364-177	Large	7.54	7.21	6.56

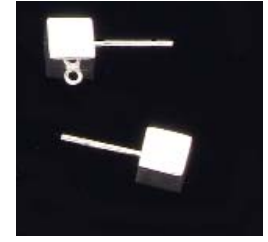
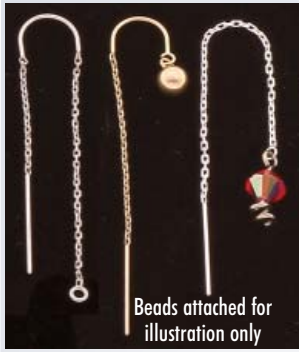


## German-style Lobster Claw Clasps

These elegant clasps are also priced at 5% off during May 2007.

Size	14KY			Sterling		
	Price ea./1	/3	/10	Price ea./1	/3	/10
7.5	360-49	\$ 5.33	\$ 5.01	\$ 4.78	364-49	\$ 1.07 \$ 0.76 \$ 0.60
9	360-50	11.53	11.00	10.57	364-50	1.30 0.98 0.81
11	360-51	16.84	16.14	15.54	364-51	1.64 1.32 1.13
15	360-52	25.04	24.07	23.20	364-52	2.91 2.59 2.30
13	360-53	24.23	23.28	22.43	364-53	2.42 2.11 1.85
15x7.5	360-88	51.21	49.59	48.44		
21x13	360-89	68.71	66.60	65.08	364-89	6.90 6.58 5.99

Lobster claw clasps are also available in 14KW, 18KY, Platinum & YGF



## Cubes and Filigree Ball Variety

Increase your design possibilities with these lovely 5mm filigree drops.

Stock #	Quality	Price ea./1	/3	/10
190-336	14KY	\$ 2.91	\$ 2.66	\$ 2.51
194-336	Sterling	1.84	1.51	1.29



## Stylish Ear Threaders in four qualities

We have three styles of the popular ear threaders, now in four different qualities. Attach your choice of drops for quick custom designs!

		Each	Ea./3	Ea./10
<b>U-Threader Double Chain Drop</b>				
220-170	14KY	\$ 9.64	\$ 9.16	\$ 8.80
221-170	14KW	10.02	9.53	9.15
222-170	YGF	2.77	2.44	2.15
224-170	Sterling	1.94	1.60	1.38
<b>U-Threader</b>				
220-171	14KY	\$ 8.07	\$ 7.64	\$ 7.33
221-171	14KW	8.45	8.01	7.68
222-171	YGF	2.26	1.93	1.68
224-171	Sterling	1.58	1.24	1.05
<b>Chain Threader</b>				
220-172	14KY	\$ 7.48	\$ 7.08	\$ 6.78
221-172	14KW	7.86	7.44	7.13
222-172	YGF	1.95	1.62	1.40
224-172	Sterling	1.45	1.09	0.91

Beautiful 6mm filigree ball ear posts come in sterling and 14K yellow gold.

Stock #	Description	Price ea./1	/3	/10
200-867	14KY Filigree Ball Ear Post	\$ 8.99	\$ 8.54	\$ 8.19
204-867	Sterling Filigree Ball Ear Post	2.17	1.83	1.59
200-868	14KY Filigree Ball Ear Post w/Ring	10.05	9.56	9.18

Ear nuts included.

These cube-shaped ear posts are great for contemporary styles.

Stock #	Description	Size	Price ea./1	/3	/10
204-813C	Sterling cube	4mm	\$ 1.53	\$ 1.20	\$ 1.00
204-812C	Sterling cube	6mm	2.64	2.31	2.03
204-819C	Sterling cube with ring	4mm	1.58	1.25	1.05
204-822C	Sterling cube with ring	6mm	2.81	2.47	2.18

Ear nuts included.

## Design earrings with the latest look!

Attract trendy, budget-minded women with the new, patented Sphearring™. Interchangeable components include a threaded wire with a drop that hangs from behind the ear, and an ornament that screws onto the front. An earring jacket-like swoop is also available to give the same look with conventional stud earrings.

We see lots of design possibilities for the new Sphearrings. Sell the mix and match concept for day into evening looks. Use created stones in Sphearrings™ or use this as an opportunity to sell a whole wardrobe of earrings with multiple diamonds and other precious stones!

14KY	14KW	Description	Price/ea
210-320	211-320	Screw-on Top w/ 5mm Ball	\$ 9.59
210-321	211-321	Screw-on Top w/ 5mm Round Basket Setting	11.84
210-322	211-322	Screw-on Top w/ 4mm Round Basket Setting	10.25
210-323	211-323	Screw-on Top w/ 3mm Round Fancy Setting	17.96
240-27PO	241-27PO	Threaded Post - Solder-On	6.89
240-28PO	241-28PO	Threaded Post - w/ Jump Ring	7.81
230-103	231-103	Swoop Wire for Stud earring - Solder-On	5.15
230-104	231-104	Swoop Wire for Stud earring - w/ Jump Ring	6.45



Design idea: Add a small spring ring to the loop, and create interchangeable drops.

Prices based on \$665 Gold and \$13.50 Silver Market

**New!**



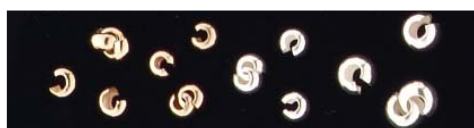
Channel



## Wire Protector in YGF and Sterling

They look and act like French wire to protect stringing material from wear and tear, but these new wire protectors are a lot easier to use!

		10-rate	50-rate
782-53	Yellow gold-filled	\$.26	\$.19
784-53	Sterling	.18	.12
		Price per 100	
786-53	Gold-plated	\$4.00/100	
785-63	Silver-plated	\$3.00/100	



## Crimp Bead Covers

What an elegant idea! Hide those scrunched up crimp beads with these covers which form into a classic round bead look.

Stock #	Quality	Size	Price ea./1	/3	/10	/50
780-50	14KY	3mm	\$1.42	\$1.21	\$1.12	\$1.07
782-50	YGF	3mm	0.76	0.35	0.19	0.13
784-50	STER	3mm	0.72	0.31	0.16	0.10
784-51	STER	4mm	0.84	0.42	0.26	0.19

### Plated Crimp Covers Priced per hundred only

785-55	White-plated	3mm	\$4.00/100			
785-56	White-plated	4mm	\$4.00/100			
786-55	Gold-plated	3mm	\$4.00/100			
786-56	Gold-plated	4mm	\$4.00/100			

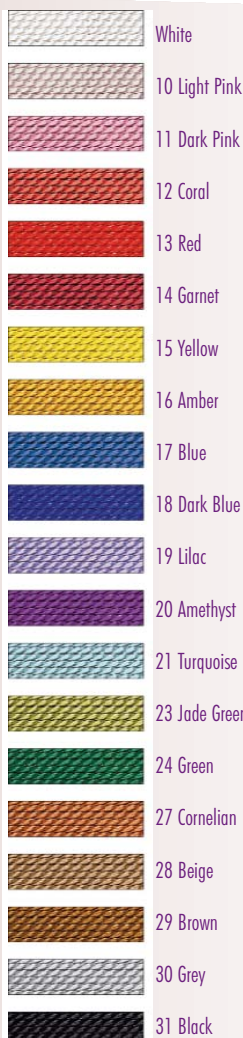


## Fine Cylinder-shaped Beads

Enhance your original designs with these oblong-shapes.

Stock #	Quality	Size	Price ea./1	/3	/10
140-242	14KY	4 x 3.5mm	\$ 1.18	\$ 0.99	\$ 0.90
140-243	14KY	5.5 x 4mm	1.45	1.24	1.14
140-244	14KY	6.5 x 4.75mm	1.58	1.37	1.27
142-241	YGF	3 x 2.75mm	0.74	0.56	0.49
142-242	YGF	4 x 3.5mm	0.76	0.58	0.50
142-244	YGF	6.5 x 4.75mm	0.85	0.66	0.58
144-241	STER	3 x 2.75mm	1.11	0.77	0.61
144-242	STER	4 x 3.5mm	1.16	0.83	0.66
144-243	STER	5.5 x 4mm	1.24	0.91	0.73
144-244	STER	6.5 x 4.75mm	1.31	0.97	0.80

Additional price break at 50 pieces



## Stock up on Griffin Bead Cord

Mix and match all Griffin Bead Cords and get the quantity price breaks

To order polyamid cord:

400-+color code+size.

To order Silk cord:

402-+ color code+size.

Sizes available in colors:

2, 3, 4, 6, 8, 12, 16

Sizes available in white:

0, 1, 2, 3, 4, 5, 6, 7, 8, 10, 12, 16

For example:

To order Polyamid size 4 in Lilac, use the stock number 400-194.

To order size 3 of White in Silk, use the stock number 402-3.

For more details, check pages 30 and 31 of your Jules Borel & Co. Tools Catalog or visit [julesborel.com](http://julesborel.com).

		Price ea./1	/3	/10	/50
Polyamide 0-7	Nylon Bead Cord	\$ 1.20	\$ 1.09	\$ 0.97	\$ 0.89
Polyamide 8-16	Nylon Bead Cord	1.35	1.15	1.02	0.94
Silk 0-7	Silk Bead Cord	1.55	1.30	1.16	1.08
Silk 8-16	Silk Bead Cord	1.75	1.64	1.49	1.38
HP	High-Perf. Bead Cord	2.10	1.85	1.70	1.55



6mm

7mm

8mm

## 6, 7, 8mm Sterling Ball Clasps

The perfect ending for beaded necklaces!

Size(mm)	Plain	Each	Corrugated	Each
6.0	364-11	\$ 3.89	364-18	\$ 4.25
7.0	364-12	4.19	364-19	4.51
8.0	364-13	4.96	364-128	5.41

Price breaks at 3, 10 and 50 pieces.



## We supply Tool Kits

Setting up another bench or teaching a class? If we don't have the tool kits you need, we will custom make them! Schools and colleges love the convenience and savings of ordering these economical kits.

- TK102W Intro to Watchmaking Tool Set, in case \$ 69.00
- TK101J Intro to Jewelry Tool Set, in carrier 149.00



*Price just reduced \$34.00!*

## High Tech Carat Scale

Weigh stones using extreme 0.005ct.-1/2 point precision! This low-profile, high tech Pct-50 carat scale from GemOro has pushbutton digital calibration. Includes batteries and an AC power adapter.

- SC9709 List \$150.00)
- Our price \$115.95.**



## Anti-static Bench Mat

Avoid static when you use this soft white mat to help keep small parts from rolling. Staying in place without adhesive, the white color will increase visual contrast while protecting your workbench's fine top.

- BN2711 Anti-static Bench Mat \$ 7.95

**New!**



## Watch Care Kit

Here's a great new item from the home jewelry cleaning experts, which includes:

- 8" x 8" Microfiber cloth
- 4" x 6" Polishing cloth
- 4" x 6" Silicone leather cleaning cloth
- 3 oz. Metal cleaning foam
- Metal gloss with brush
- Gem wand for hard-to-reach areas

- BLITZ-20603 \$ 9.95 JC

## Please Note!

### Ronda Movement Number Change



To maintain numbering

consistency, the RON732 movement is now RON1032. Please note this on page 64 of your Movements Catalog.

## Service Upgrade More time to order!

Starting March 1, 2007, the cut-off time for same day shipping of **overnight** orders is 3:00pm Central time, not 2:00pm.